

LETTER • OPEN ACCESS

Potential influence of the Deepwater Horizon oil spill on phytoplankton primary productivity in the northern Gulf of Mexico

To cite this article: Yao Li *et al* 2019 *Environ. Res. Lett.* **14** 094018

View the [article online](#) for updates and enhancements.

Environmental Research Letters



LETTER

Potential influence of the Deepwater Horizon oil spill on phytoplankton primary productivity in the northern Gulf of Mexico

OPEN ACCESS

RECEIVED

11 April 2019

REVISED

29 July 2019

ACCEPTED FOR PUBLICATION

31 July 2019

PUBLISHED

13 September 2019

Yao Li¹ , Chuanmin Hu² , Antonietta Quigg^{3,4} and Huilin Gao^{1,5} ¹ Zachry Department of Civil and Environmental Engineering, Texas A&M University, College Station, TX 77843, United States of America² College of Marine Science, University of South Florida, St. Petersburg, FL 33701, United States of America³ Department of Marine Biology, Texas A&M University at Galveston, Galveston, TX 77553, United States of America⁴ Department of Oceanography, Texas A&M University, College Station, TX 77843, United States of America⁵ Author to whom any correspondence should be addressed.E-mail: hgao@civil.tamu.edu**Keywords:** Deepwater Horizon oil spill, phytoplankton, chlorophyll *a*, fluorescence, primary productivity, recovery, remote sensingSupplementary material for this article is available [online](#)

Original content from this work may be used under the terms of the [Creative Commons Attribution 3.0 licence](#).

Any further distribution of this work must maintain attribution to the author(s) and the title of the work, journal citation and DOI.

**Abstract**

Nine years after the Deepwater Horizon (DwH) oil spill (20 April–15 July 2010), the recovery of primary productivity at the ocean surface remains to be investigated. Here, we used the normalized fluorescence line height (nFLH) from the Moderate Resolution Imaging Spectroradiometer as an indicator of chlorophyll *a* concentration (Chl *a*). First, from the spatiotemporal variations of nFLH between 2001 and 2017, a reduction of nFLH after the DwH oil spill was observed (for a relatively long period, from 2011 to 2014). Second, a stepwise multiple regression model was used to examine which of the following environmental factors could explain the annual variations in nFLH: river discharge, total nitrogen load, total phosphorus load, photosynthetically available radiation, sea surface temperature and wind speed. Results show that river discharge, sea surface temperature and wind speed are the primary factors that regulated the annual nFLH variations in the DwH area during the pre-spill years. In contrast, this same model could not explain the reduction of nFLH for the four years after the DwH oil spill. After 2015, nFLH appears to have resumed to the pre-spill concentrations. Here we suggest that the nFLH reduction between 2011 and 2014 could have originated from the DwH oil spill, although the exact mechanism is yet to be determined.

1. Introduction

The Deepwater Horizon (DwH)⁶ oil spill, which occurred between 20 April, 2010 and 15 July, 2010, released over 130 million gallons of crude oil over the course of 87 d into the Gulf of Mexico. It is the largest marine oil spill in US history (Crone and Tolstoy 2010, McNutt *et al* 2012). Numerous studies have investigated the influence of the accident on the region, looking at factors such as: the oil components and their toxicity to aquatic organisms (Reddy *et al* 2012, White *et al* 2012, Forth *et al* 2017), the response of the microbial community (Kostka *et al* 2011, King *et al* 2015, Quigg *et al* 2016),

and the negative psychological and socio-economic impacts (Grattan *et al* 2011, Smith *et al* 2011, Gill *et al* 2012). With regard to the question about whether the marine ecosystem in the Gulf of Mexico has fully recovered, researchers have published different perspectives on this. For example, Girard and Fisher (2018) demonstrated—using high-definition imagery data—that deep-sea corals were heavily impacted and had not recovered by 2017. Using state-structured models, Girard *et al* (2018) suggested that the complete recovery of corals will take up to three decades (depending on the initial level of impact). As for the food web, the oil spill may have led to a significant decrease of the fishery yield which could take more than 30 years (especially for some slowly-growing populations) to recover fully (Ainsworth *et al* 2018). Tatariw *et al* (2018) found that the salt marsh

⁶ A full list of the acronyms used in study is summarized in table S1 is available online at stacks.iop.org/ERL/14/094018/mmedia.

denitrification capacity (over the moderate and heavy oiling areas) had not yet recovered six years after the DwH oil spill. Long term studies are required—especially given the long life cycles of many of the organisms of interest, and the interannual variability in the meteorological and environmental conditions of the Gulf of Mexico.

The impacts of the DwH spill on phytoplankton population dynamics in the northern Gulf of Mexico have been under debate since the accident occurred (Ozhan *et al* 2014). Hu *et al* (2011) suggested that phytoplankton productivity may have been stimulated by the DwH oil spill in the short term (weeks-months). A more recent study, however, found that the Mississippi River discharge may have also accelerated the phytoplankton growth after the spill (O'Connor *et al* 2016), which is consistent with previous observations of primary productivity in the region (Quigg *et al* 2011). Bretherton *et al* (2018) mimicked the chemical conditions after the DwH oil spill and found that the biological and physiological responses of phytoplankton to crude oil vary with species. Although some members of the phytoplankton community respond positively to the addition of oil, this was found to not be the case when both oil and dispersant were present (Bretherton *et al* 2019). Moreover, the chemical structure of the crude oil, the concentration level, and various environmental factors (e.g. temperature, light, and nutrient level) also influence the phytoplankton response to oil and/or dispersant (Vargo *et al* 1982, Østgaard *et al* 1984, González *et al* 2009, Ozhan and Bargu 2014, Ozhan *et al* 2014, Kamalanathan *et al* 2018). In general, most studies have focused on short-term responses of chlorophyll *a* (Chl *a*) concentrations to the DwH oil spill (days-weeks-months). An evaluation of the long-term response (multi-year) is still lacking.

Chl *a*, which is used as a proxy for the phytoplankton biomass and primary productivity in the ocean, is generally estimated globally using satellite data (Behrenfeld and Falkowski 1997). Approximately 40% of all carbon fixation on Earth comes from marine phytoplankton (Falkowski 1994). Compared to the traditional ship surveys and laboratory analysis—both of which are time-consuming, and limited to small spatial and temporal coverage—satellite remote sensing provides large-scale observations of the Chl *a* at near real-time (Behrenfeld and Falkowski 1997). To date, many satellite sensors have been used for monitoring ocean color, such as the Sea-viewing Wide Field-of-View Sensor (SeaWiFS) (O'Reilly *et al* 1998), the Medium Resolution Imaging Spectrometer (Moses *et al* 2009), the Moderate Resolution Imaging Spectroradiometer (MODIS) (Hu *et al* 2012), and the more recent Sentinel-3A Ocean and Land Color Instrument (OLCI) (Toming *et al* 2017). However, it is challenging to obtain accurate Chl *a* estimates in coastal waters due to the interference caused by colored dissolved organic matter (D'Sa and

Miller 2003, D'Sa *et al* 2006) and by the atmosphere (Siegel *et al* 2000, Le *et al* 2013). Recent studies suggest that the MODIS normalized fluorescence line height (nFLH)—which is determined after an atmospheric correction, and is relatively insensitive to colored dissolved organic matter—serves as a good indicator of Chl *a* concentration (Hu *et al* 2005, McKee *et al* 2007, Hu *et al* 2011).

The goal of this study was to evaluate whether the Chl *a* concentration level—a proxy for primary productivity—was affected by the DwH oil spill in the northern Gulf of Mexico over a multi-year time period (and, if so, has it recovered to pre-spill levels—and when)? First, the spatiotemporal variations of the MODIS nFLH were evaluated from 2001 to 2017. Then, a multiple regression model was developed by correlating the nFLH anomaly with the anomalies of six environmental variables. Finally, by comparing the MODIS nFLH anomaly with the estimated nFLH anomaly (using the statistical model), the potential influence of DwH on long-term productivity in the northern Gulf of Mexico was explored.

2. Methods

2.1. Study area

The northern Gulf of Mexico region where the ocean surface was once covered by the DwH oil spill was selected as the study area. Figure 1 shows the extent of the domain and the spatial distribution of 'oiling days'—that is, the total number of days that a surface location was covered by oil (during the period from 23 April to 11 August 2010). This was based on data downloaded from the Gulf of Mexico Environmental Response Management Application (<https://erma.noaa.gov/gulfofmexico/erma.html>). Specifically, oiling days were calculated based on satellite Synthetic Aperture Radar (SAR) image classifications (Garcia-Pineda *et al* 2013). Here, the footprint of the surface oiling is referred to as the 'overall-DwH area', while the portion that suffered the most severe impacts (i.e. which had more than 30 oiling days) is referred to as the 'central-DwH area'. The overall-DwH area includes the entire study domain of 96 278 km², while the central-DwH area accounts for 7.4% (7121 km²) of this. By comparing the Chl *a* in these two areas, the oil spill effects were evaluated across spatial scales.

2.2. MODIS nFLH

Because the standard algorithms used for estimating Chl *a* from MODIS have shown relatively high uncertainties for the northeastern Gulf of Mexico (Hu *et al* 2003, D'Sa *et al* 2006), we used the better performing MODIS nFLH as the proxy of Chl *a* in this region (Hu *et al* 2005, McKee *et al* 2007). The nFLH is defined as the difference between the water-leaving radiance at 678 nm and a linearly interpolated water-leaving radiance at two surrounding bands (667 and

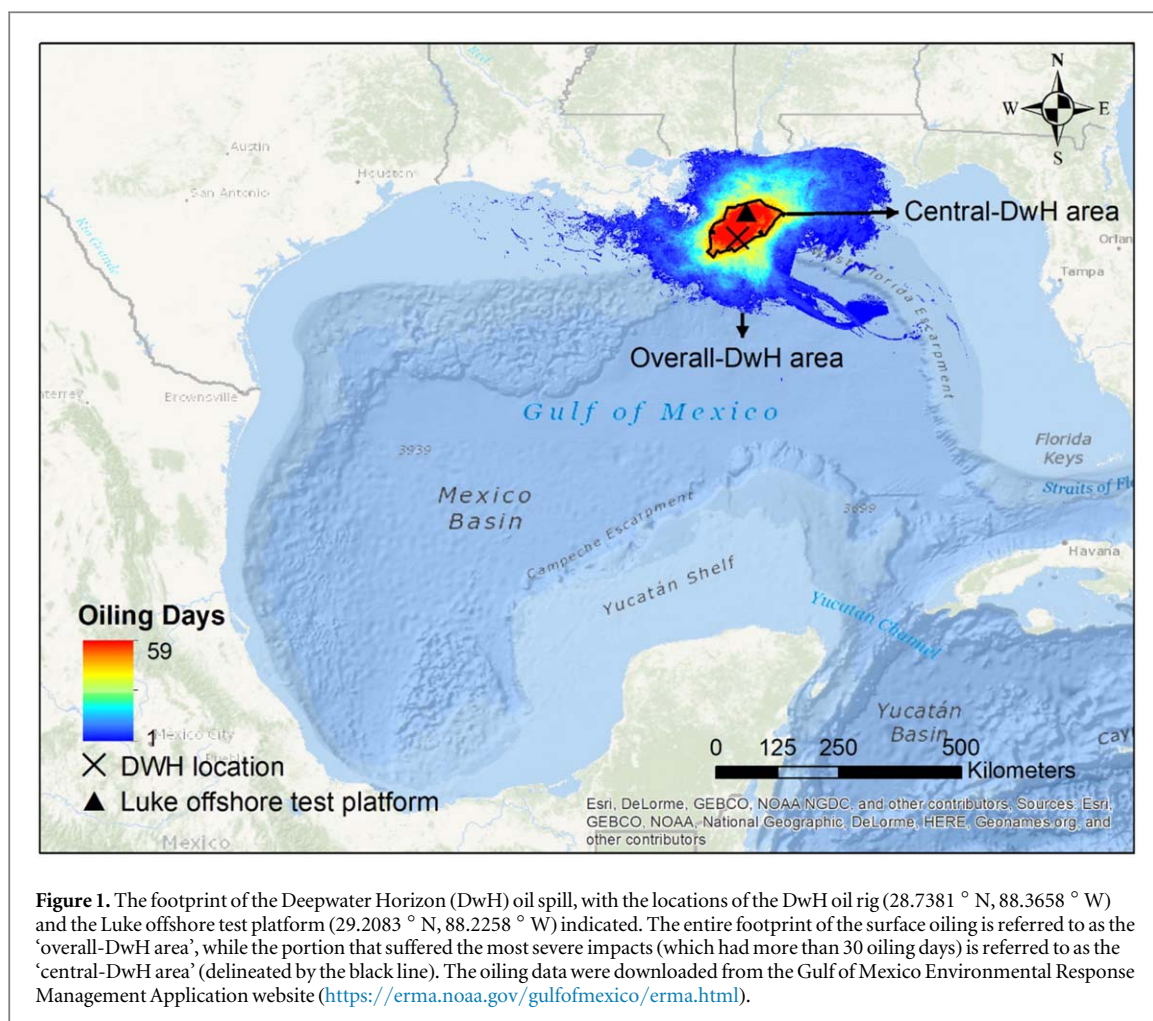


Figure 1. The footprint of the Deepwater Horizon (DwH) oil spill, with the locations of the DwH oil rig (28.7381 ° N, 88.3658 ° W) and the Luke offshore test platform (29.2083 ° N, 88.2258 ° W) indicated. The entire footprint of the surface oiling is referred to as the ‘overall-DwH area’, while the portion that suffered the most severe impacts (which had more than 30 oiling days) is referred to as the ‘central-DwH area’ (delineated by the black line). The oiling data were downloaded from the Gulf of Mexico Environmental Response Management Application website (<https://erma.noaa.gov/gulfofmexico/erma.html>).

748 nm) (Behrenfeld *et al* 2009). Monthly MODIS nFLH data with a spatial resolution of 4 km (representing the period from January 2001 to December 2017) were obtained from the NASA Ocean Color website (<https://oceancolor.gsfc.nasa.gov/>) (data accessed in spring 2018), and then delineated for the study area (Gao and Li 2019).

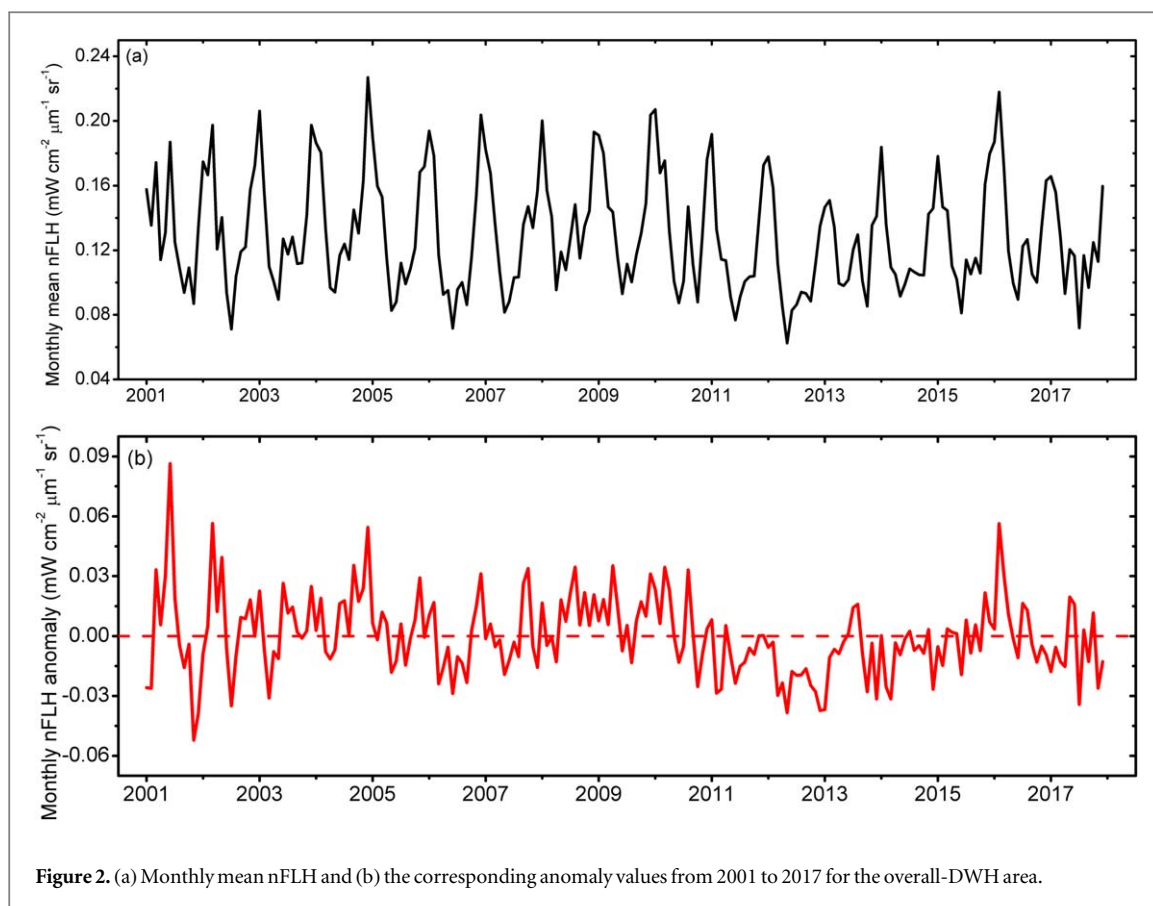
2.3. Environmental factors

In this study, we selected six physical and chemical environmental variables that may influence Chl *a* in the DwH area: river discharge (Q), sea surface temperature (SST), photosynthetically active radiation (PAR), wind speed (WS), total phosphorus load (TP), and total nitrogen load (TN). The daily river discharge data for the Mississippi River at Tarbert Landing (Gage ID: 01100Q) and the Atchafalaya River at Simmesport (Gage ID: 03045Q) from 2001 to 2017 were obtained from the US Army Corps of Engineers (<http://rivergages.mvr.usace.army.mil>). Monthly discharge values were calculated for these two stations, and the values from the two stations were summed to represent the total monthly river discharge into the Gulf of Mexico. The 4 km monthly SST and PAR data were obtained from the NASA Ocean Color website (<https://oceancolor.gsfc.nasa.gov/>), and were further

processed into monthly time series for the overall-DwH area (Gao and Li 2019). Wind speed data were collected from the NOAA National Data Buoy Center (<https://ndbc.noaa.gov/>). Since the Deepwater Horizon station (Station ID: 42872) was destroyed on 20 April, 2010, the wind data were acquired from the nearest station—the Luke offshore test platform (Station ID: 42040). The hourly wind speeds were aggregated to monthly mean values, except in cases where all data were missing for a certain month. In these cases, the climatological mean values for that month were used. The monthly TP and TN loads were obtained from the USGS stations located at the Atchafalaya and Mississippi Rivers (https://nrtwq.usgs.gov/mississippi_loads/#/GULF) (Lee *et al* 2017). The monthly load amount is the product of constituent concentration and discharge integrated over time. The time series of these environmental factors are shown in figure S1.

2.4. Approach

To evaluate the variations of the nFLH (and its anomaly) before and after the DwH spill at different spatial and temporal scales, the monthly data were further processed into monthly climatology mean values (e.g. the climatology in January is the mean of the nFLH values of all Januaries from 2001 to 2017) and



annual mean values. The monthly nFLH anomaly time series values were calculated by subtracting the monthly climatology mean values from the monthly values. To further explore whether the DwH oil spill had impacted the nFLH, a stepwise multiple regression model was developed after Ho (2006). The anomalies of the nFLH and the environmental variables were used in the procedure so that the correlation between MODIS observations and model estimations would not be affected by the seasonal cycles. First, the monthly climatological values for these six environmental factors were derived, and then the anomaly time series were generated. In the stepwise multiple regression model, the monthly nFLH anomaly was set as the dependent variable, while the anomalies of the environmental forcings were the independent variables. For each of the independent variables in the multiple regression model, only those terms that passed the significance test (with p -values < 0.05) were adopted. The nFLH anomaly values estimated by the model were then compared with the MODIS observations. Specifically, the correlation (R), bias, and standard error (SE) were used to evaluate the performance of the regression model.

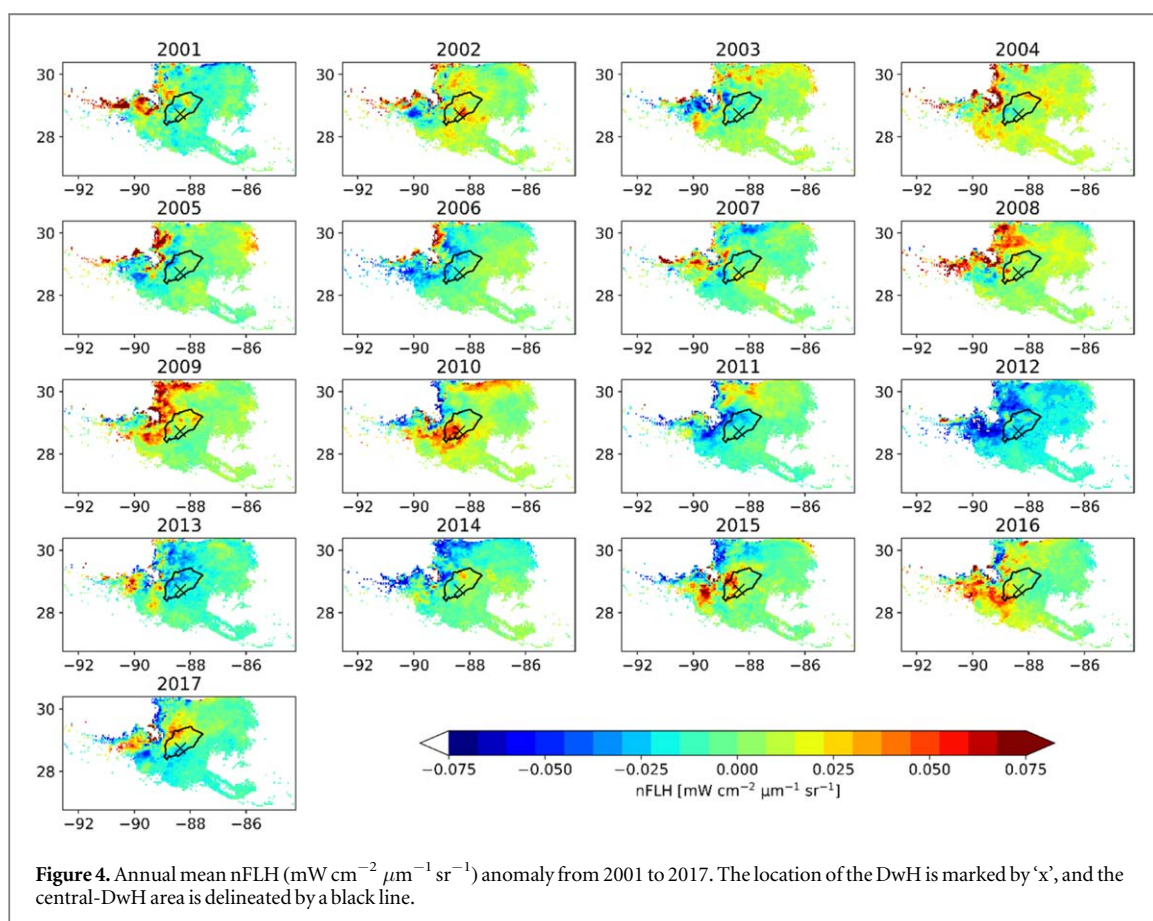
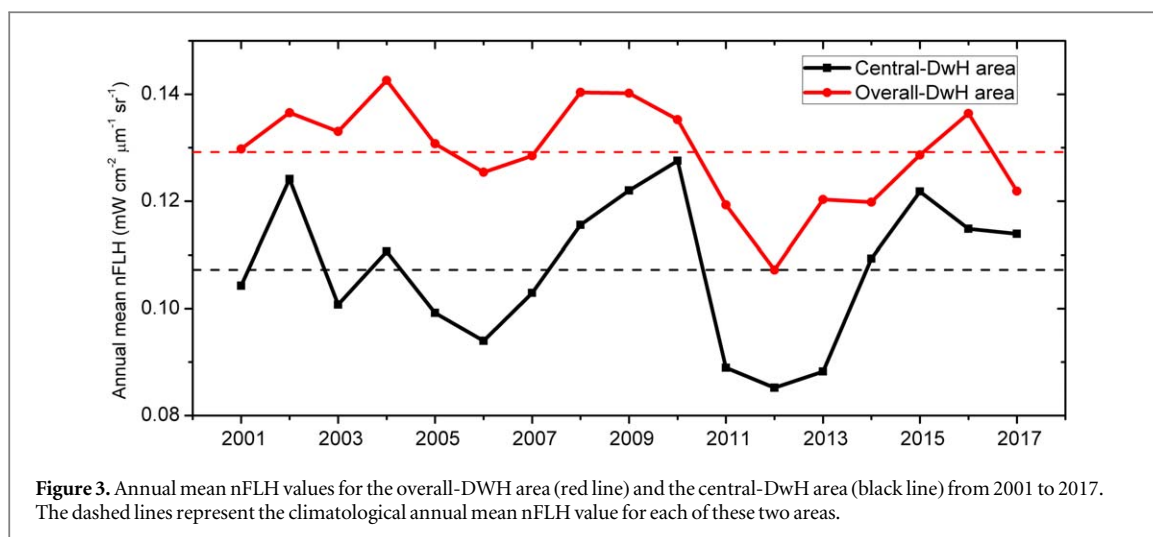
3. Results

3.1. Spatiotemporal variations of nFLH and anomaly

Figure 2 shows the monthly mean nFLH and corresponding anomaly values from 2001 to 2017 for the

overall-DwH area. From the monthly mean time series, it is evident that the nFLH had seasonal patterns with peaks of 0.151 – 0.227 $\text{mW cm}^{-2} \mu\text{m}^{-1} \text{sr}^{-1}$ during the winter (December–February) and dips of 0.062 – 0.095 $\text{mW cm}^{-2} \mu\text{m}^{-1} \text{sr}^{-1}$ in the late spring to early summer (May to July). Overall, the monthly anomaly values are mostly negative from 2011 to 2015. Additionally, the annual mean nFLH values within the overall-DwH area and the central-DwH area were compared from 2001 to 2017 (figure 3). For the overall-DwH area, the nFLH decreased after the DwH oil spill (in 2010) and reached its lowest point in 2012 (0.107 $\text{mW cm}^{-2} \mu\text{m}^{-1} \text{sr}^{-1}$), and then resumed to the long term mean value (0.129 $\text{mW cm}^{-2} \mu\text{m}^{-1} \text{sr}^{-1}$) in 2015. For the central-DwH area, nFLH had a similar pattern except in 2010. The nFLH peaked in 2010 over the central-DwH area (0.128 $\text{mW cm}^{-2} \mu\text{m}^{-1} \text{sr}^{-1}$), which was caused by the short-term stimulation of phytoplankton due to the oil spill (Hu *et al* 2011) and by the contributions of river discharge (O'Connor *et al* 2016). Then, the nFLH plunged in 2011 and remained relatively low until 2013, when it again began to increase (and exceeded the long term mean value of 0.107 $\text{mW cm}^{-2} \mu\text{m}^{-1}$ in 2014). It is worth noting that the annual nFLH in the central-DwH area dropped more significantly than in the overall-DwH area in 2011.

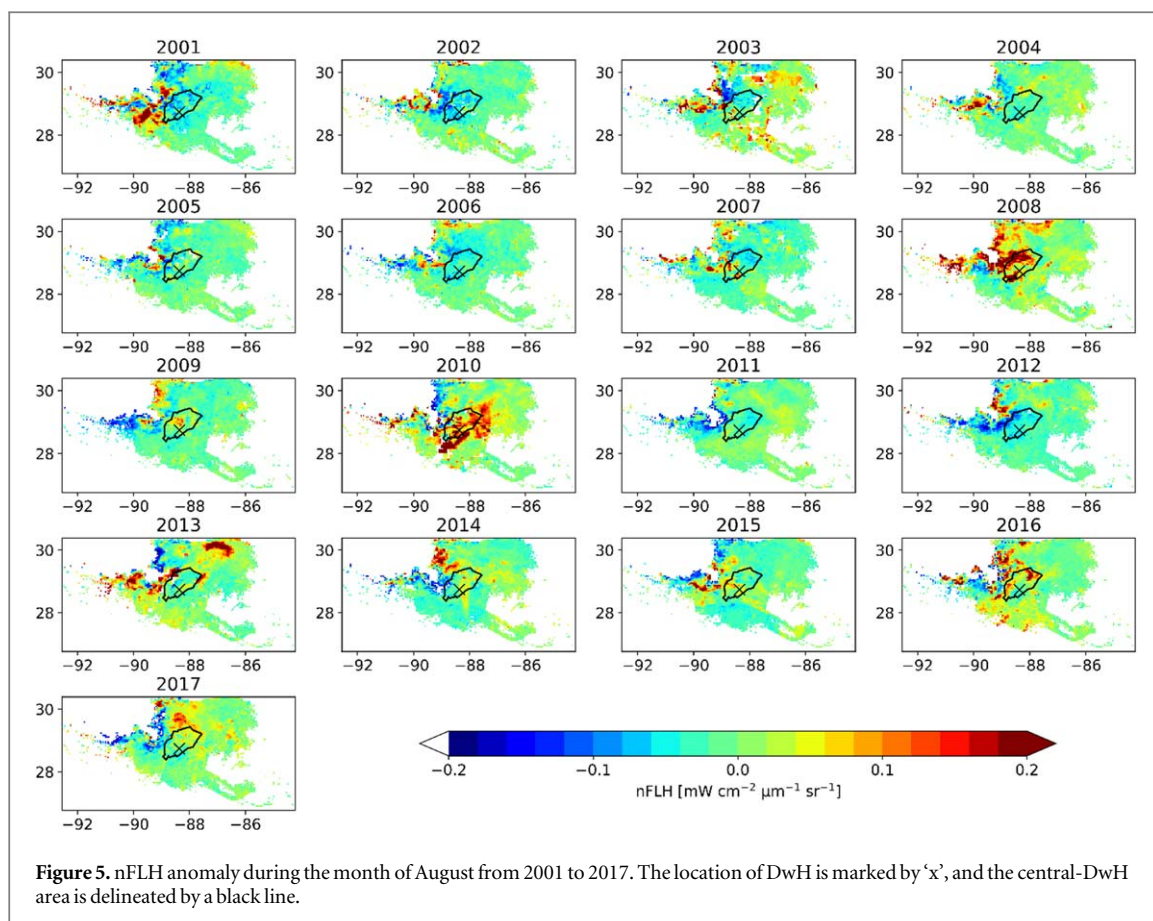
Figure 4 shows the spatial patterns of the annual nFLH anomaly from 2001 to 2017. In the central-DwH area, obvious positive anomalies were observed



in 2010 and 2015, while negative anomalies prevailed from 2011 to 2013. The positive anomaly in 2010 was clearly stronger than any others that occurred in the previous years. The positive anomaly in 2015 consists of two small isolated clusters—one within and one outside of the central-DwH area—which differs from the pattern in 2010. In the overall-DwH area, the anomaly values were mostly negative from 2011 to 2014, which are consistent with the annual mean nFLH time series in figure 3. Moreover, large positive anomalies were observed in 2008 and 2009 along the

coast, but not in the central-DwH area. These anomalies may be due to the high discharge (Q) in these two years (figure S2). Regardless, the locations of these anomalies indicate that primary productivity along the coast, which is close to the outlet and is rich in nutrients from freshwater inflows, is more sensitive than that in the central-DwH area.

Moreover, the nFLH anomaly patterns in August were examined from 2001 to 2017 (figure 5). An apparent positive anomaly can be observed surrounding the central-DwH area in August 2010. This also



agrees with the findings by Hu *et al* (2011) which suggests that Chl *a* was stimulated by the DwH oil spill shortly after it occurred. In addition, distinct positive anomalies also occurred within the central-DwH area in August 2008, but there was no apparent positive anomaly that emerged in this area for August in the years after 2010. Since SST is negatively correlated to nFLH, the positive anomalies in 2008 can be explained by the fact that the SST in that year was the lowest for the study period (figure S3). However, the SST in 2010 was above average, which supports the above point about the oil spill stimulating Chl *a*.

In addition, obvious negative anomalies were present from 2011 to 2013 in the central-DwH area (either with regard to the annual anomaly or the August anomaly), indicating that the oil spill may not have stimulated the phytoplankton in the relatively long term. The US drought of 2012 may also have exacerbated the negative anomaly by reducing the nutrient loading into the Gulf of Mexico (Wetz *et al* 2011), but this effect might not have lasted for a very long time (as the annual mean Q in 2013 recovered to the climatological value of the period from 2001 to 2017; see figure S2).

3.2. The relationship between nFLH and environmental forcing factors

To examine the potential effects of the oil spill on the nFLH over the DwH area, the MODIS observed nFLH

anomaly data were compared with their counterpart from the stepwise multiple regression model. Through the regression procedure, three variables—the anomalies of Q, SST, and WS—were identified as the significant predictors for nFLH anomaly. The stepwise regression results are summarized in table S2, with the coefficients listed in table S3. The nFLH anomaly is most related to the anomaly of Q, which shows a significant correlation ($R = 0.31$, $p = 0.000$). By incorporating the anomalies of SST and WS in a stepwise manner, the R values increased to 0.42 and 0.46, while the standard errors decreased to 0.0180 and 0.0177 $\text{mW cm}^{-2} \mu\text{m}^{-1} \text{sr}^{-1}$, respectively. This selected model (with three independent variables) is thus referred to as Model_3 hereafter.

The biases of the Model_3 estimated monthly nFLH anomaly values from the MODIS nFLH anomaly during the study period are shown in figure S4. The nFLH anomaly is clearly overestimated from 2011 to 2014 (positive bias), which may have been caused by the DwH oil spill. To evaluate the performance of Model_3 on an annual basis, we calculated the annual mean bias (figure 6) based on the monthly bias values within each year. The annual mean bias values from 2001 to 2010 were mostly negative with a mean of $-0.00464 \text{ mW cm}^{-2} \mu\text{m}^{-1} \text{sr}^{-1}$. However, they became positive in 2011 and peaked in 2012. The annual mean bias suggests a considerable overestimation from 2011 to 2014, with a mean value of

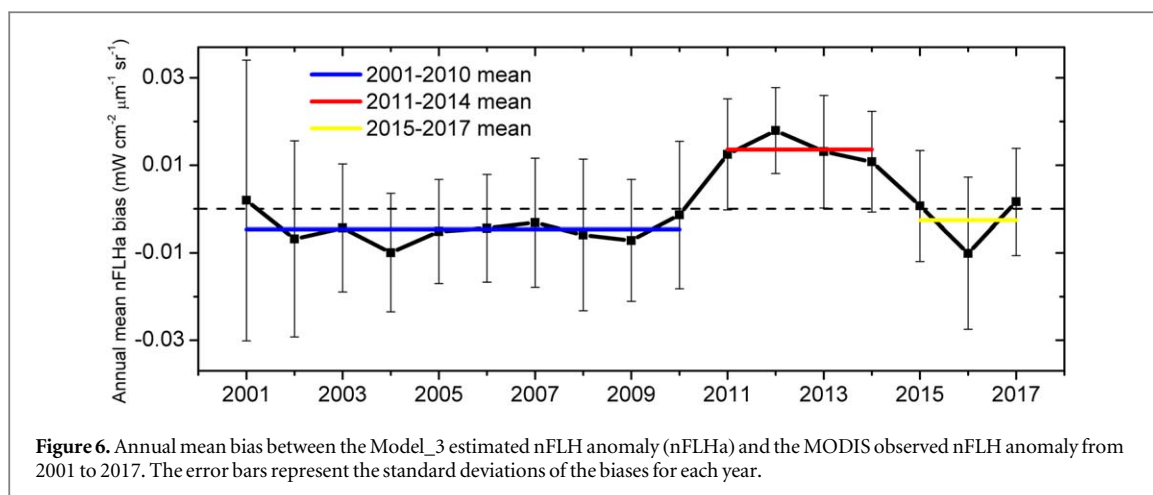


Figure 6. Annual mean bias between the Model_3 estimated nFLH anomaly (nFLHa) and the MODIS observed nFLH anomaly from 2001 to 2017. The error bars represent the standard deviations of the biases for each year.

$0.0136 \text{ mW cm}^{-2} \mu\text{m}^{-1} \text{ sr}^{-1}$. During 2015, the annual mean bias resumed to the pre-oil level, with a mean bias of $-0.00261 \text{ mW cm}^{-2} \mu\text{m}^{-1} \text{ sr}^{-1}$ from 2015 to 2017.

4. Discussion

The effects of environmental forcing factors on phytoplankton vary across coastal areas (Green and Gould 2008, Hu *et al* 2011, Quigg *et al* 2011, Le *et al* 2014). Based on the stepwise multiple regression analysis of the anomaly data, Q, SST, and WS were identified as the most significant factors regulating the anomaly of Chl *a* (as indicated by nFLH) in the DwH area. According to the model results, Q is the most important factor—which agrees with the findings by Le *et al* (2014). However, previous studies have indicated that SST and WS could impact primary productivity in the Gulf of Mexico (Agawin *et al* 2000, Green and Gould 2008, Bianchi *et al* 2010). It has been reported that nitrogen and phosphorous are the two key limiting nutrients for primary productivity in the northern Gulf of Mexico (Dagg and Breed 2003, Lohrenz *et al* 1997, Lohrenz *et al* 2008, Quigg *et al* 2011). Although total nitrogen and total phosphorous were not included explicitly in the model, their impacts were implicitly included because of their high correlations with Q (figure S5). The relatively low correlation between the model estimates and the MODIS observations ($R = 0.46$) can be attributed to two sources of uncertainties. The first are the uncertainties of the input data. The data associated with the model were collected via different approaches (e.g. remote sensing, *in situ*) and are of various spatio-temporal resolutions. These inconsistencies unavoidably have impacted the correlation negatively. The second source is related to the environmental variables which were not included in the model. Even though our model included the principal environmental drivers that regulate the nFLH in the DwH area, there are still other factors that influence primary

productivity given the complexity of the marine ecosystem (e.g. loop currents, tropical storms, etc).

The biases between the modeled and observed nFLH anomalies have allowed us to explore the effects of environmental factors beyond those from the regression model (with the assumption that the input data uncertainties only add noise to the biases). Figure 6 clearly shows that the model experienced a significant change point in 2010. A mild underestimation from 2001 to 2010 is contrasted with a strong overestimation (2.9 times larger than the magnitude of the underestimation) from 2011 to 2014. Since the switch from under- to over-estimation began in 2010 and lasted for several years—and the most common environmental drivers have been represented in the model—we propose that this suppression effect might be attributed to the DwH oil spill. This argument also agrees with the study by Parsons *et al* (2015) which found that chlorophyll biomass was 85% lower in 2010 compared to the baseline of the previous 20 years (primarily due to the lower quantity of phytoplankton, which decreased by 95%). Given that the DwH oil spill may have stimulated some phytoplankton while inhibiting others (Ozhan and Bargu 2014), there was a short-term increase in Chl *a* concentrations observed after the incident (Hu *et al* 2011). While some reports have found that the surface water of the Gulf of Mexico has recovered well from the DwH oil spill (Ferris 2017 and Franz 2017), D'Sa *et al* (2016) found fluorescence intensities and dissolved organic carbon concentrations three years after the DwH oil spill suggestive of a potential long-term persistence of oil in the dissolved organic carbon pool in the northern Gulf of Mexico. After 2015, primary productivity appears to have resumed to the pre-spill concentration levels. Thus, collectively the results from these studies offer insights about the responses of the primary producers.

While the surface oil was transported away from the DwH area by surface ocean currents and cleanup efforts, the multi-year reduction of primary productivity may be attributed to spill residue in the underlying

sediments. For instance, Duan *et al* (2018) investigated the persistence of residual oil in the sediment at Bay Jimmy five years after the spill. They found that the concentrations of total petroleum hydrocarbons, n-alkanes, and polycyclic aromatic hydrocarbons increased significantly within the sediment after the oil spill. Previous studies have shown that polycyclic aromatic hydrocarbons had depressive effects on the phytoplankton biomass (Marwood *et al* 1999, Sargian *et al* 2005, Pelletier *et al* 2006, Kamalanathan *et al* 2018). Five years after the spill, most of the n-alkanes and polycyclic aromatic hydrocarbons had degraded and recovered to pre-spill levels. Even though the concentrations of total petroleum hydrocarbons were still relatively high, they had decreased by 97% compared to the level at 1.5 years after the spill. These, and the *in situ* observations reported in Franz (2017) and Ferris (2017), support our finding that primary productivity started to recover around 2015.

It is also worth noting that this study is focused on surface water (i.e. the first few meters) because of the strong light attenuation in the wavelengths used to calculate MODIS nFLH (i.e. 667, 678, and 748 nm). Moreover, our findings are based on a statistical model, which does not represent physical mechanisms. Additionally, although earlier analysis by NASA showed sensor degradation after 2011, the degradation was corrected through improved time-dependent sensor calibration and vicarious calibration in NASA's data reprocessing version 2014.0 (Hu *et al* 2015). Therefore, the temporal patterns of MODIS nFLH are unlikely affected by sensor calibration changes.

To date, continuous long-term field observations before and after the spill are still lacking, which hamper the understanding of the variability within this large area. In the absence of such long-term field data, this study shows an alternative way to evaluate the long-term changes of primary productivity (via Chl *a*) in the DwH area, which may be adapted for other oil spill events.

5. Conclusions

The most significant finding from this study is that—although annual changes in MODIS nFLH (used as a proxy for Chl *a*, an indicator for primary productivity) before 2010 can be explained by environmental forcing factors (river discharge, sea surface temperature, and wind speed)—the same explanation does not hold between 2011 and 2014. The behavior between 2011 and 2014 is speculated to be a result of the long-term, chronic impact of the DwH oil spill. Although it is impossible to verify this hypothesis due to a lack of continuous field measurements, this study represents the first attempt to use long-term satellite data to evaluate the potential chronological effects of the DwH oil spill on primary productivity. This also

suggests the importance of continuous field measurements to help pinpoint the reasons behind the changes of phytoplankton productivity in future oil spills.

Acknowledgments


This research was supported by a grant from the Gulf Research Program Early-Career Research Fellowship to Huilin Gao at Texas A&M University (project number 2000007265). It was also partially supported by consortium grants from the Gulf of Mexico Research Initiative to C-IMAGE and DEEPEND to Chuanmin Hu and ADDOMEx and ADDOMEx-2 (Aggregation and Degradation of Dispersants and Oil by Microbial Exopolymers) to Antonietta Quigg. This research has also benefitted from the usage of the Texas A&M Supercomputing Facility (<http://sc.tamu.edu>). The open access publishing fees for this paper have been covered by the Texas A&M University Open Access to Knowledge Fund (OAKFund), supported by the University Libraries and the Vice President for Research.

Data availability statement

The data that support the findings of this study are openly available at the Gulf of Mexico Research Initiative Information and Data Cooperative (GRIIDC) at <https://data.gulfresearchinitiative.org/data/E2.x842.000:0001> (<https://doi.org/10.7266/n7-xsm6-wx65>).

ORCID iDs

Yao Li  <https://orcid.org/0000-0001-8745-191X>

Chuanmin Hu  <https://orcid.org/0000-0003-3949-6560>

Antonietta Quigg  <https://orcid.org/0000-0001-5640-1426>

Huilin Gao  <https://orcid.org/0000-0001-7009-8005>

References

- Agawin N S, Duarte C M and Agustí S 2000 Nutrient and temperature control of the contribution of picoplankton to phytoplankton biomass and production *Limnol. Oceanogr.* **45** 591–600
- Ainsworth C H *et al* 2018 Impacts of the Deepwater Horizon oil spill evaluated using an end-to-end ecosystem model *PLoS One* **13** 21
- Behrenfeld M J and Falkowski P G 1997 Photosynthetic rates derived from satellite-based chlorophyll concentration *Limnol. Oceanogr.* **42** 1–20
- Behrenfeld M J, Westberry T K, Boss E S, O'Malley R T, Siegel D A, Wiggert J D, Franz B, McLain C, Feldman G and Doney S C 2009 Satellite-detected fluorescence reveals global physiology of ocean phytoplankton *Biogeosciences* **6** 779
- Bianchi T S, DiMarco S, Cowan J Jr, Hetland R, Chapman P, Day J and Allison M 2010 The science of hypoxia in the

- Northern Gulf of Mexico: a review *Sci. Total Environ.* **408** 1471–84
- Bretherton L, Williams A, Genzer J, Hillhouse J, Kamalanathan M, Finkel Z V and Quigg A 2018 Physiological response of 10 phytoplankton species exposed to macondo oil and the dispersant, Corexit *J. Phycol.* **54** 317–28
- Bretherton L *et al* 2019 Response of natural phytoplankton communities exposed to crude oil and chemical dispersants during a mesocosm experiment *Aquat. Toxicol.* **206** 43–53
- Crone T J and Tolstoy M 2010 Magnitude of the 2010 Gulf of Mexico oil leak *Science* **330** 634
- D'Sa E J and Miller R L 2003 Bio-optical properties in waters influenced by the Mississippi river during low flow conditions *Remote Sens. Environ.* **84** 538–49
- D'Sa E J, Miller R L and Del Castillo C 2006 Bio-optical properties and ocean color algorithms for coastal waters influenced by the Mississippi River during a cold front *Appl. Opt.* **45** 7410–28
- D'Sa E J, Overton E B, Lohrenz S E, Maiti K, Turner R E and Freeman A 2016 Changing dynamics of dissolved organic matter fluorescence in the northern Gulf of Mexico following the Deepwater Horizon oil spill *Environ. Sci. Technol.* **50** 4940–50
- Dagg M J and Breed G A 2003 Biological effects of Mississippi River nitrogen on the northern gulf of Mexico—a review and synthesis *J. Mar. Syst.* **43** 133–52
- Duan J, Liu W, Zhao X, Han Y, O'Reilly S and Zhao D 2018 Study of residual oil in Bay Jimmy sediment 5 years after the Deepwater Horizon oil spill: persistence of sediment retained oil hydrocarbons and effect of dispersants on desorption *Sci. Total Environ.* **618** 1244–53
- Falkowski P G 1994 The role of phytoplankton photosynthesis in global biogeochemical cycles *Photosynth. Res.* **39** 235–58
- Ferris R 2017 Much of the Deepwater Horizon oil spill has disappeared because of bacteria *CNBC* (<https://www.cnbc.com/2017/06/26/much-of-the-deepwater-horizon-oil-spill-has-disappeared-because-of-bacteria.html>)
- Forth H P, Mitchelmore C L, Morris J M and Lipton J 2017 Characterization of oil and water accommodated fractions used to conduct aquatic toxicity testing in support of the Deepwater Horizon oil spill natural resource damage assessment *Environ. Toxicol. Chem.* **36** 1450–9
- Franz J 2017 The Gulf shows some small signs of recovery, seven years after Deepwater Horizon *PRI* (<https://www.pri.org/stories/2017-03-31/gulf-shows-some-small-signs-recovery-seven-years-after-deepwater-horizon>)
- Gao H and Li Y 2019 Monthly normalized fluorescence line height (nFLH), photosynthetically available radiation (PAR), and sea surface temperature (SST) data using MODIS over the Deepwater Horizon area from 2001 to 2017 *The Gulf of Mexico Research Initiative Information and Data Cooperative (GRIIDC)* (<https://doi.org/10.7266/n7-xsm6-wx65>)
- Garcia-Pineda O, MacDonald I R, Li X, Jackson C R and Pichel W G 2013 Oil spill mapping and measurement in the Gulf of Mexico with Textural classifier neural network algorithm (TCNNA) *IEEE J. Sel. Top. Appl. Earth Obs. Remote Sens.* **6** 2517–25
- Gill D A, Picou J S and Ritchie L A 2012 The Exxon Valdez and BP oil spills: A comparison of initial social and psychological impacts *Am. Behav. Sci.* **56** 3–23
- Girard F and Fisher C R 2018 Long-term impact of the Deepwater Horizon oil spill on deep-sea corals detected after seven years of monitoring *Biol. Conservation* **225** 117–27
- Girard F, Shea K and Fisher C R 2018 Projecting the recovery of a long-lived deep-sea coral species after the Deepwater Horizon oil spill using state-structured models *J. Appl. Ecol.* **55** 1812–22
- González J, Figueiras F, Aranguren-Gassis M, Crespo B, Fernández E, Morán X A G and Nieto-Cid M 2009 Effect of a simulated oil spill on natural assemblages of marine phytoplankton enclosed in microcosms *Estuarine Coast. Shelf Sci.* **83** 265–76
- Grattan L M, Roberts S, Mahan W T Jr, McLaughlin P K, Otwell W S and Morris Jr J G 2011 The early psychological impacts of the Deepwater Horizon oil spill on Florida and Alabama communities *Environ. Health Perspect.* **119** 838
- Green R E and Gould R W 2008 A predictive model for satellite-derived phytoplankton absorption over the Louisiana shelf hypoxic zone: Effects of nutrients and physical forcing *J. Geophys. Res.: Oceans* **113**
- Ho R 2006 *Handbook of Univariate and Multivariate Data Analysis and Interpretation with SPSS* (Boca Raton: CRC Press)
- Hu C, Barnes B, Qi L and Corcoran A 2015 A harmful algal bloom of *Karenia brevis* in the Northeastern Gulf of Mexico as revealed by MODIS and VIIRS: a comparison *Sensors* **15** 2873–87
- Hu C, Lee Z and Franz B 2012 Chlorophyll algorithms for oligotrophic oceans: A novel approach based on three-band reflectance difference *J. Geophys. Res.: Oceans* **117**
- Hu C, Muller-Karger F E, Biggs D C, Carder K L, Nababan B, Nadeau D and Vanderbloemen J 2003 Comparison of ship and satellite bio-optical measurements on the continental margin of the NE Gulf of Mexico *Int. J. Remote Sens.* **24** 2597–612
- Hu C, Muller-Karger F E, Taylor C J, Carder K L, Kelble C, Johns E and Heil C A 2005 Red tide detection and tracing using MODIS fluorescence data: a regional example in SW Florida coastal waters *Remote Sens. Environ.* **97** 311–21
- Hu C, Weisberg R H, Liu Y, Zheng L, Daly K L, English D C, Zhao J and Vargo G A 2011 Did the northeastern Gulf of Mexico become greener after the deepwater horizon oil spill? *Geophys. Res. Lett.* **38**
- Kamalanathan M, Xu C, Schwehr K, Bretherton L, Beaver M, Doyle S M, Genzer J, Hillhouse J, Sylvan J B and Santschi P 2018 Extracellular enzyme activity profile in a chemically enhanced water accommodated fraction of surrogate oil: toward understanding microbial activities after the Deepwater Horizon oil spill *Frontiers Microbiol.* **9** 798
- King G, Kostka J, Hazen T and Sobocky P 2015 Microbial responses to the Deepwater Horizon oil spill: from coastal wetlands to the deep sea *Annu. Rev. Mar. Sci.* **7** 377–401
- Kostka J E, Prakash O, Overholt W A, Green S, Freyer G, Canion A, Delgado J, Norton N, Hazen T C and Huettel M 2011 Hydrocarbon-degrading bacteria and the bacterial community response in Gulf of Mexico beach sands impacted by the Deepwater Horizon oil spill *Appl. Environ. Microbiol.* **77** 7962–74
- Le C, Hu C, English D, Cannizzaro J, Chen Z, Feng L, Boler R and Kovach C 2013 Towards a long-term chlorophyll-a data record in a turbid estuary using MODIS observations *Prog. Oceanogr.* **109** 90–103
- Le C, Lehrter J C, Hu C, Murrell M C and Qi L 2014 Spatiotemporal chlorophyll-a dynamics on the Louisiana continental shelf derived from a dual satellite imagery algorithm *J. Geophys. Res.: Oceans* **119** 7449–62
- Lee C J, Murphy J C, Crawford C G and Deacon J R 2017 *Methods for Computing Water-Quality Loads at Sites in the US Geological Survey National Water Quality Network* (Reston, VA: US Geological Survey) (<https://doi.org/10.3133/ofr20171120>)
- Lohrenz S E, Fahnenstiel G L, Redalje D G, Lang G A, Chen X and Dagg M J 1997 Variations in primary production of northern Gulf of Mexico continental shelf waters linked to nutrient inputs from the Mississippi River *Mar. Ecol. Prog. Ser.* **155** 45–54
- Lohrenz S E, Redalje D G, Cai W-J, Acker J and Dagg M 2008 A retrospective analysis of nutrients and phytoplankton productivity in the Mississippi River plume *Cont. Shelf Res.* **28** 1466–75
- Marwood C A, Smith R E, Solomon K R, Charlton M N and Greenberg B M 1999 Intact and photomodified polycyclic aromatic hydrocarbons inhibit photosynthesis in natural assemblages of Lake Erie phytoplankton exposed to solar radiation *Ecotoxicol. Environ. Saf.* **44** 322–7
- McKee D, Cunningham A, Wright D and Hay L 2007 Potential impacts of nonalgal materials on water-leaving Sun induced

- chlorophyll fluorescence signals in coastal waters *Appl. Opt.* **46** 7720–9
- McNutt M K, Camilli R, Crone T J, Guthrie G D, Hsieh P A, Ryerson T B, Savas O and Shaffer F 2012 Review of flow rate estimates of the Deepwater Horizon oil spill *Proc. Natl Acad. Sci.* **109** 20260–7
- Moses W J, Gitelson A A, Berdnikov S and Povazhnyy V 2009 Satellite estimation of chlorophyll-a concentration using the red and NIR bands of MERIS—The Azov Sea case study *IEEE Geosci. Remote Sens. Lett.* **6** 845–9
- O'Connor B S, Muller-Karger F E, Nero R W, Hu C and Peebles E B 2016 The role of mississippi river discharge in offshore phytoplankton blooming in the northeastern Gulf of Mexico during August 2010 *Remote Sens. Environ.* **173** 133–44
- O'Reilly J E, Maritorena S, Mitchell B G, Siegel D A, Carder K L, Garver S A, Kahru M and McClain C 1998 Ocean color chlorophyll algorithms for SeaWiFS *J. Geophys. Res.: Oceans* **103** 24937–53
- Østgaard K, Hegseth E and Jensen A 1984 Species-dependent sensitivity of marine planktonic algae to Ekofisk crude oil under different light conditions *Botanica Mar.* **27** 309–18
- Ozhan K and Bargu S 2014 Distinct responses of Gulf of Mexico phytoplankton communities to crude oil and the dispersant corexit® Ec9500A under different nutrient regimes *Ecotoxicology* **23** 370–84
- Ozhan K, Parsons M L and Bargu S 2014 How were phytoplankton affected by the deepwater horizon oil spill? *BioScience* **64** 829–36
- Parsons M, Morrison W, Rabalais N, Turner R and Tyre K 2015 Phytoplankton and the Macondo oil spill: a comparison of the 2010 phytoplankton assemblage to baseline conditions on the Louisiana shelf *Environ. Pollut.* **207** 152–60
- Pelletier E, Sargian P, Payet J and Demers S 2006 Ecotoxicological effects of combined UVB and organic contaminants in coastal waters: a review *Photochem. Photobiol.* **82** 981–93
- Quigg A, Passow U, Chin W C, Xu C, Doyle S, Bretherton L, Kamalanathan M, Williams A K, Sylvan J B and Finkel Z V 2016 The role of microbial exopolymers in determining the fate of oil and chemical dispersants in the ocean *Limnol. Oceanogr. Lett.* **1** 3–26
- Quigg A, Sylvan J B, Gustafson A B, Fisher T R, Oliver R L, Tozzi S and Ammerman J W 2011 Going west: nutrient limitation of primary production in the Northern Gulf of Mexico and the importance of the Atchafalaya River *Aquat. Geochem.* **17** 519
- Reddy C M, Arey J S, Seewald J S, Sylva S P, Lemkau K L, Nelson R K, Carmichael C A, McIntyre C P, Fenwick J and Ventura G T 2012 Composition and fate of gas and oil released to the water column during the Deepwater Horizon oil spill *Proc. Natl Acad. Sci.* **109** 20229–34
- Sargian P, Mostajir B, Chatila K, Ferreyra G A, Pelletier É and Demers S 2005 Non-synergistic effects of water-soluble crude oil and enhanced ultraviolet-B radiation on a natural plankton assemblage *Mar. Ecol. Prog. Ser.* **294** 63–77
- Siegel D A, Wang M, Maritorena S and Robinson W 2000 Atmospheric correction of satellite ocean color imagery: the black pixel assumption *Appl. Opt.* **39** 3582–91
- Smith L, Smith M and Ashcroft P 2011 Analysis of environmental and economic damages from British Petroleum's Deepwater Horizon oil spill *Albany Law Rev.* **74** 563–85
- Tatarw C, Flournoy N, Kleinhuizen A A, Toilette D, Overton E B, Sobecky P A and Mortazavi B 2018 Salt Marsh denitrification is impacted by oiling intensity six years after the Deepwater Horizon oil spill *Environ. Pollut.* **243** 1606–14
- Toming K, Kutser T, Uiboupin R, Arikas A, Vahter K and Paavel B 2017 Mapping water quality parameters with sentinel-3 ocean and land colour instrument imagery in the Baltic Sea *Remote Sens.* **9** 21
- Vargo G, Hutchins M and Almquist G 1982 The effect of low, chronic levels of no. 2 fuel oil on natural phytoplankton assemblages in microcosms: 1. Species composition and seasonal succession *Mar. Environ. Res.* **6** 245–64
- Wetz M S, Hutchinson E A, Lunetta R S, Paerl H W and Taylor J C 2011 Severe droughts reduce estuarine primary productivity with cascading effects on higher trophic levels *Limnol. Oceanogr.* **56** 627–38
- White H K, Hsing P-Y, Cho W, Shank T M, Cordes E E, Quattrini A M, Nelson R K, Camilli R, Demopoulos A W and German C R 2012 Impact of the Deepwater Horizon oil spill on a deep-water coral community in the Gulf of Mexico *Proc. Natl Acad. Sci.* **109** 20303–8